

**safepix wall** 

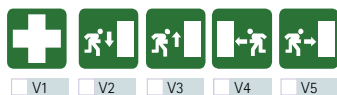
 MADE IN EU design by KD



montare pixfix a parete e inserirvi safepix. montaggio semplice e veloce.

pixfix einfach wandmontieren und das safepix motiv einschieben. fertig.

simply wallmount pixfix and insert the pixfix sign. that's it.



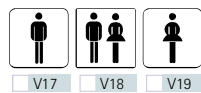
V1  V2  V3  V4  V5



V6  V7  V8  V9  V10



V11  V12  V13  V14  V15  V16



V17  V18  V19



V20  V21

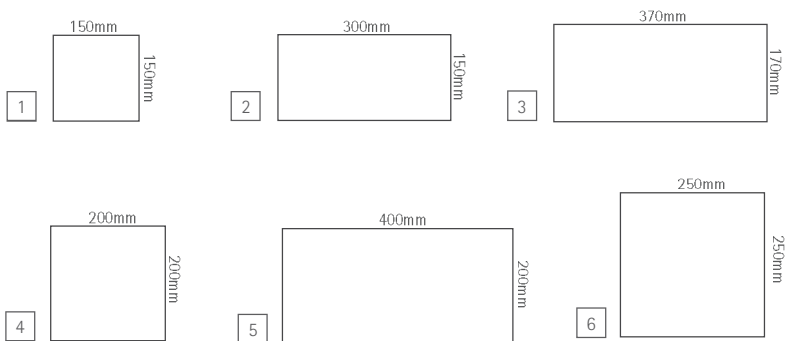


V22  V23

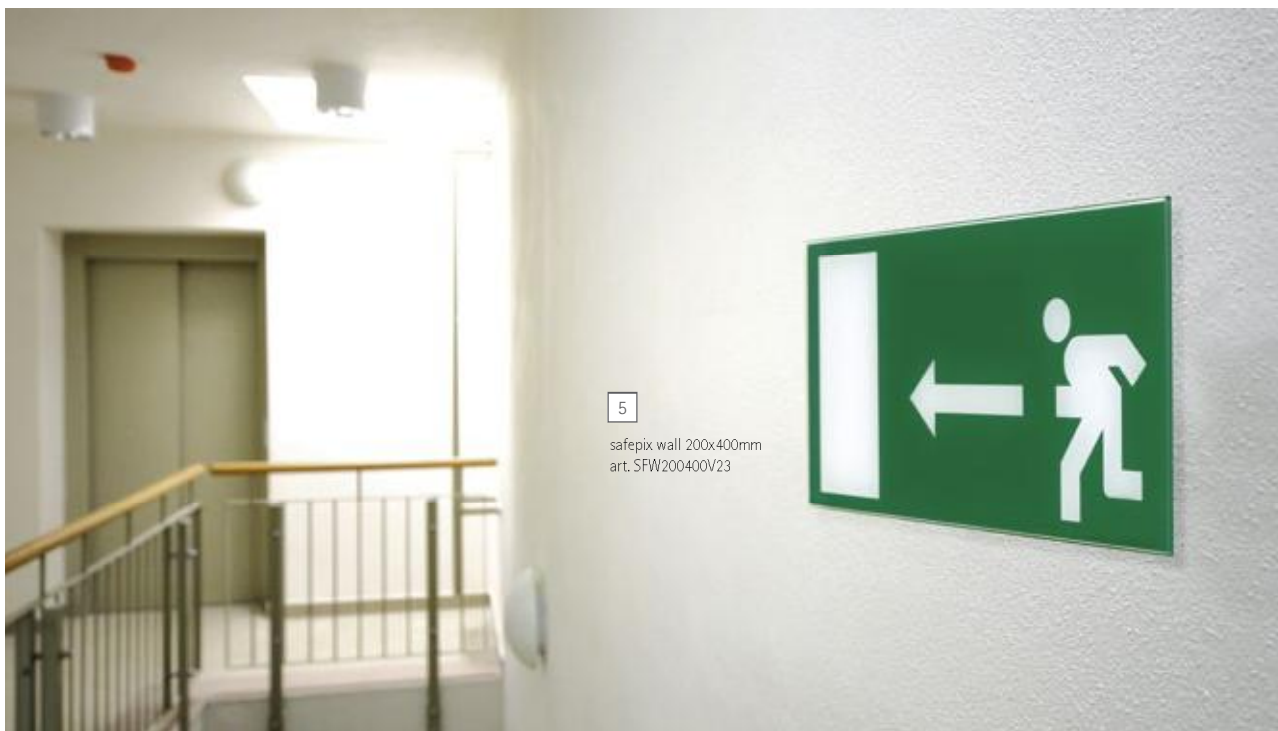
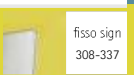
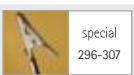
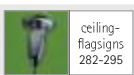
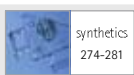
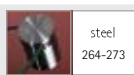
**IT** segnaletica di sicurezza di alta qualità : vetro temperato di sicurezza serigrafato sul retro con i più comuni pittogrammi. il montaggio viene realizzato con pixfix, il nostro sistema invisibile di montaggio a muro semplice ma intelligente. in fase di ordine si prega di specificare codice dell'articolo e numero del pittogramma desiderato. le norme relative alla segnaletica di sicurezza variano da nazione a nazione. vi preghiamo quindi di verificare che i pittogrammi offerti corrispondano effettivamente alle normative sulla segnaletica di sicurezza del vostro paese.

**DE** hochwertige sicherheitsbeschilderung: temperiertes sicherheitsglas rückseitig besiedruckt mit gängigen motiven. die montage erfolgt mit pixfix, unserem cleveren und einfachen wand-montage system. bei bestellung bitte artikelcode um die nummer des gewünschten motivs ergänzen. die normen der sicherheitsbeschilderung sind national unterschiedlich. prüfen sie daher, ob diese motive ihren nationalen normen zur sicherheitsbeschilderung entsprechen.

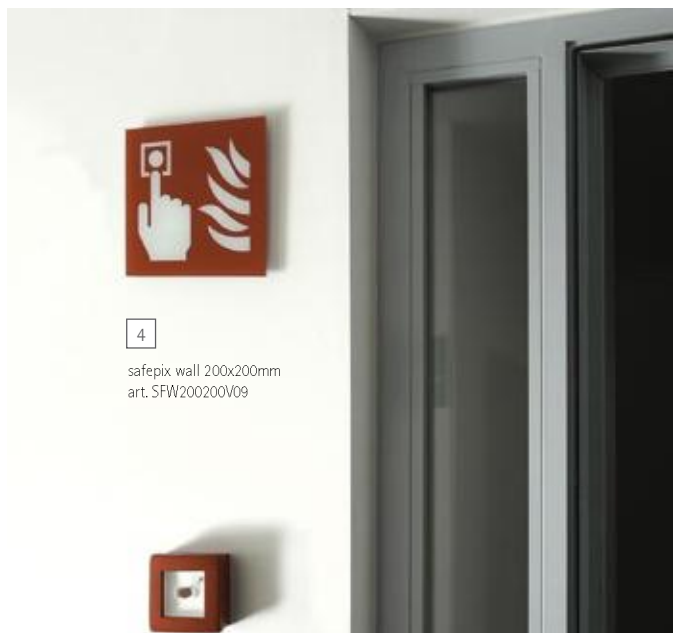
**EN** high grade security signage: tempered glass with a silkscreen print of most common symbols on rear side. the mounting is easy and convenient with our smart pixfix. when ordering please complete the item code with the article number of the requested symbol. as the norms for security signage differ from country to country, we ask you to check whether the symbols correspond with your national regulations.



234 ulteriori informazioni pag. mehr details s. more information p.



5  
safepix wall 200x400mm  
art. SFW200400V23



4  
safepix wall 200x200mm  
art. SFW200200V09



4  
safepix wall 200x200mm  
art. SFW200200V18

## safepix wall <sup>1)</sup>

n° articolo | artikelnr. | product nr.

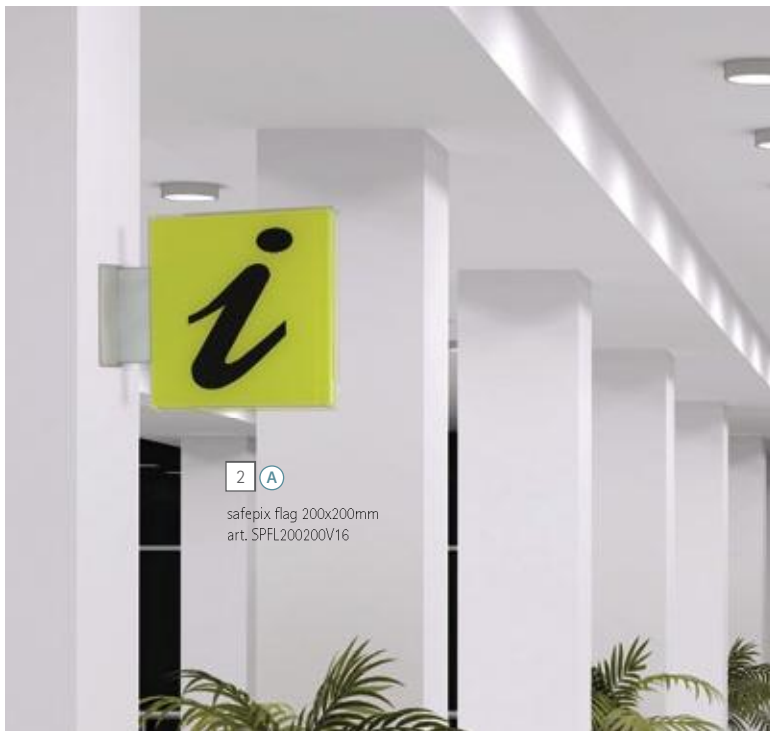
1	<b>SFW150150</b>	*	150x150mm, 1pc
2	<b>SFW150300</b>	**	150x300mm, 1pc
3	<b>SFW170370</b>	**	170x370mm, 1pc
4	<b>SFW200200</b>	*	200x200mm, 1pc
5	<b>SFW200400</b>	**	200x400mm, 1pc
6	<b>SFW250250</b>	*	250x250mm, 1pc

<sup>1)</sup> in vendita da febbraio 2011 | auslieferung ab februar 2011 | on sale from february 2011

(\*V1-V19)

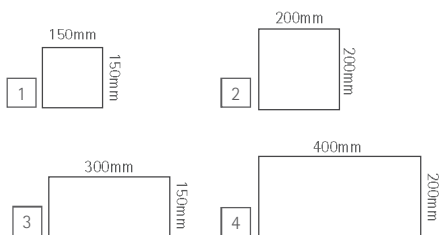
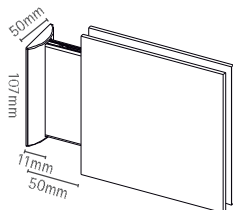
(\*\*V20-V23)





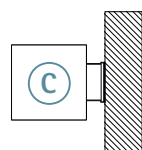
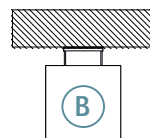
# safepix flag

MADE IN EU design by KD



## safepix flag<sup>1)</sup>

n° articolo   artikelnr.   product nr.			
1	SPFL150150	*	150x150mm, 1pc
2	SPFL200200	*	200x200mm, 1pc
3	SPFL150300	**	150x300mm, 1pc
4	SPFL200400	**	200x400mm, 1pc



n° articolo   artikelnr.   product nr.			
1	SPC150150	*	150x150mm, 1pc
2	SPC200200	*	200x200mm, 1pc
3	SPC150300	**	150x300mm, 1pc
4	SPC200400	**	200x400mm, 1pc

n° articolo   artikelnr.   product nr.			
1	SPFR150150	*	150x150mm, 1pc
2	SPFR200200	*	200x200mm, 1pc
3	SPFR150300	**	150x300mm, 1pc
4	SPFR200400	**	200x400mm, 1pc

<sup>1)</sup> in vendita da aprile 2011 | auslieferung ab april 2011 | on sale from april 2011

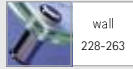
(\*V1-V19)

(\*\*V20-V23)

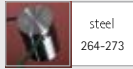
306 ulteriori informazioni pag. mehr details s. more information p.



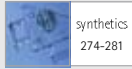
337 337



wall  
228-263



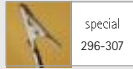
steel  
264-273



synthetics  
274-281



ceiling-  
flagsigns  
282-295



special  
296-307



fisso sign  
308-337



2 C

safepix flag 200x200mm  
art. SPFR200200V6



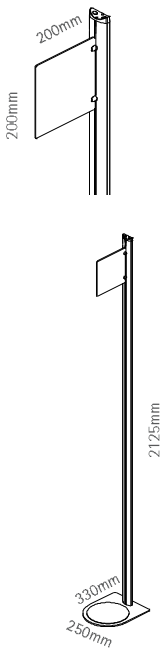
4 B

safepix flag 200x400mm  
art. SPC200400V21



# fireman

MADE IN EU design by KD



**IT** fireman è il segnalatore autoportante per estintori, ideale laddove non sia possibile allestire un tipo di segnaletica permanente: per esempio in ambienti vincolati alla tutela dei monumenti o per eventi itineranti di ogni tipo. è sufficiente posizionare l'espositore fireman e appoggiare l'estintore sulla base. in caso di emergenza l'estintore è facilmente identificabile e sempre pronto all'uso.

**DE** fireman die mobile beschilderung ist genau das richtige, wenn eine fixe sicherheitsbeschilderung nicht erwünscht oder möglich ist, wie z.b. in denkmalgeschützten gebäuden und bei events aller art. fireman einfach aufstellen und den löscher auf die basis stellen. im ernstfall ist der löscher gut zu identifizieren und schnell bei der hand

**EN** fireman, the mobile signage for fire extinguishers, is perfect where fixed mounted signage is undesired such as heritage protected buildings or events of any kind. simply position the mobile signage fireman and put the extinguisher on the base. in case of emergency the extinguisher is easily located and quickly at hand.



1  
fireman

## fireman

n° articolo | artikelnr. | product nr.

1 FRM2100

fireman, 1pc